

m-jumbo conduit connection



Advantages



Large connections

The m-jumbo family consists of conduit connections manufactured from high-grade polyamide and are designed for large conduits of sizes NW 70 and NW 95.

The connection has protection rating IP 52. In addition to this the conduit remains rotatable in the fitting.

The protection rating can be easily increased to IP 65 using an additional sealing ring.

The cable protection conduit can be easily fixed to the conduit connection by means of two half shells.

The connections are inherently stable and also provide a high level of tear-out strength.



- ✓ Easy assembly
- ✓ High protection class
- ✓ Conduit remains rotatable in the fitting
- ✓ Straight and 90° versions
- ✓ High tear-out strength

m-jumbo conduit connection product range



**Type SA-Jumbo
(flange connection)**

Straight flange connection for jumbo cable protection conduits.

Page 150



**Type KFW-Jumbo
(90° flange connection)**

Right-angled flange connection for jumbo cable protection conduits.

Page 151

Combination options

	Conduit connection from NW 70	
	SA-Jumbo	KFW-Jumbo
EF	✗	✗
EW	✓	✓
EWf	✓	✓
EWS	✓	✓
EWX	✓	✓
EW-G	✗	✗
EW-HY	✓	✓
EW-LS	✓	✓
EW-PA	✓	✓
EW-PA-LS	✓	✓
EW-PA-UL	✓	✓
EW-PA-EX	✓	✓
EW-PAB	✓	✓
EW-PAE	✓	✓
EW-PAL	✓	✓
EW-PAP	✗	✗
EW-PP	✓	✓
EW-PRF	✓	✓
EW-TEF	✓	✓
EWT-PA	✓	✓
EWT-PP	✓	✓
EWX-LS	✓	✓
EWX-PA	✓	✓
EWX-PA-LS	✓	✓
EWX-PA-UL	✓	✓
EWX-PAE	✓	✓
EWX-PAE-LS	✓	✓
GF	✗	✗

✓ combinable

✗ not combinable

Material data

	Material	Temperature area [°C]			Protection rating on corrugated conduit	Fire specifications UL94	UL File number E148958	Halogen-free	Phosphorous-free	Cadmium-free	Asbestos-free	Lead-free	Silicone-free	RoHS Compliant
		Min.	Max.	Short periods										
SA-Jumbo	Polyamide PA6	-40	110	140	IP 52 IP 65 with additional sealing ring	V0		✓	✓	✓	✓	✓	✓	✓
KFW-Jumbo	Polyamide PA6	-40	110	140	IP 52 IP 65 with additional sealing ring	V0		✓	✓	✓	✓	✓	✓	✓



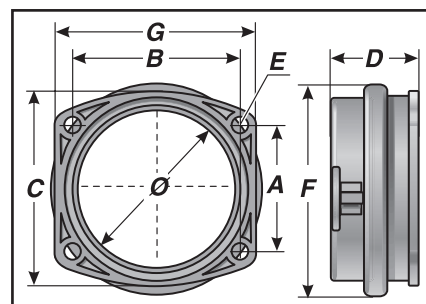
RoHS
compliance



- Split ring makes assembly easy
- High tear-out strength thanks to inherently stable connection ring
- No sealing → conduit turns in the fitting
- With sealing → higher level of protection
- O-ring for flange/housing included in delivery



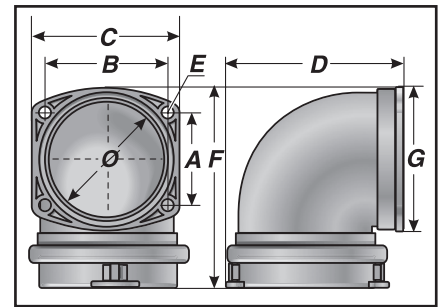
DS

150

RoHS
compliant



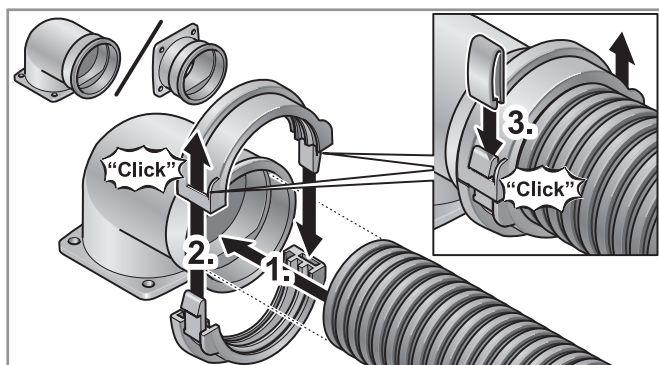
- Split ring makes assembly easy
- High tear-out strength thanks to inherently stabile connection ring
- No sealing → conduit turns in the fitting
- With sealing → higher level of protection
- O-ring for flange/housing included in delivery



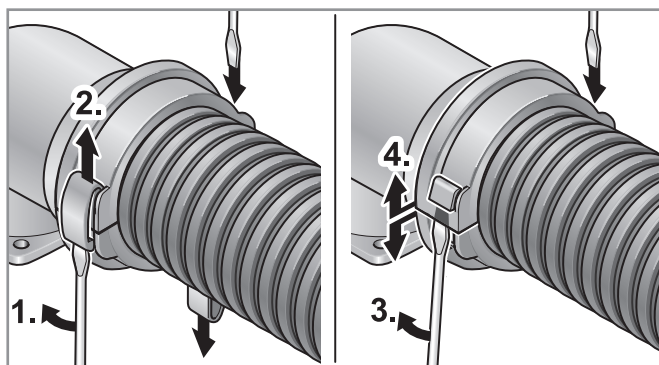
DS

DS 95 83101240

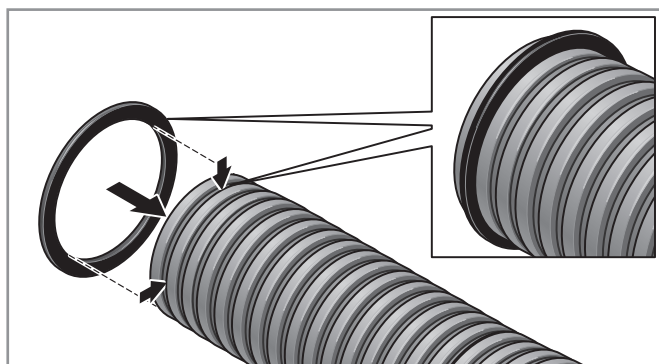
Assembly



Insert cable protection conduit into fitting. Position and fix half shells onto the fitting. Fit locking mechanisms on both sides.



Loosen and remove locking mechanisms on both sides with an appropriate tool. Loosen latching and remove half shells. Remove cable protection conduit from the fitting.



An addition sealing ring is needed on the cable protection conduit to achieve a protection rating of IP 65. To this end pull the seal onto the first recess on the cable protection conduit. Thereafter assemble according to step 1.